

## MEDICAL OFFICE SPACE AVAILABLE

60101 Bodnar Boulevard | Mishawaka, IN 46544



## Finished and Unfinished Space Available In This Medical Office Building

<b>Total Building:</b>	47,250 SF
<b>Available:</b>	7,162 SF (1st Floor), 18,140 SF (2nd Floor)
<b>Built:</b>	2007
<b>Zoned:</b>	PUD
<b>Utilities:</b>	Municipal
<b>HVAC:</b>	Gas-Forced Air Heat & A/C
<b>Lease Rate:</b>	\$14.95 - \$19.95 PSF NNN, + \$7.40 PSF Est. CAM (Shell up to finished. Includes \$2.00 PSF build-out allowance per year of lease term.)

### Details:

Multi-tenant medical office building is part of a master-planned regional medical campus with beautifully landscaped grounds on the south side of Mishawaka. Existing tenants are LabCorp, St. Joseph Regional Medical Centers (Trinity Health System) Sleep Clinic and Family Practice with Imaging. The building was built in 2007 and benefits from the efficiencies of the newer mechanicals while enjoying modern cosmetics and ADA accessibility. There is 2,582 SF of finished space and 4,580 SF of shell space on the first floor. On the second floor, there is 12,094 SF of finished space and 6,046 SF of shell space. Build-out allowance dependent upon length of lease and credit worthiness of the tenant(s). Site has expansion possibilities.

[VIEW PROPERTY ONLINE](#)

[VIEW PROPERTY VIDEO](#)



# NAI Cressy

P 574.271.4060 | F 574.271.4292 | [CRESSY.COM](http://CRESSY.COM)  
200 N. Church Street, Suite 200 | Mishawaka, IN 46544

Connect with us! [in](#) [t](#) [f](#) [v](#)

Information furnished regarding property for sale, rental or financing is from sources deemed reliable. But no warranty or representation is made as to the accuracy thereof and same is submitted subject to errors, omissions, change of price, rental or other conditions, prior sale, leased, financing or withdrawal without notice. No liability of any kind is to be imposed on the broker herein. NAI Cressy is the Global Brokerage Division of Cressy Commercial Real Estate.

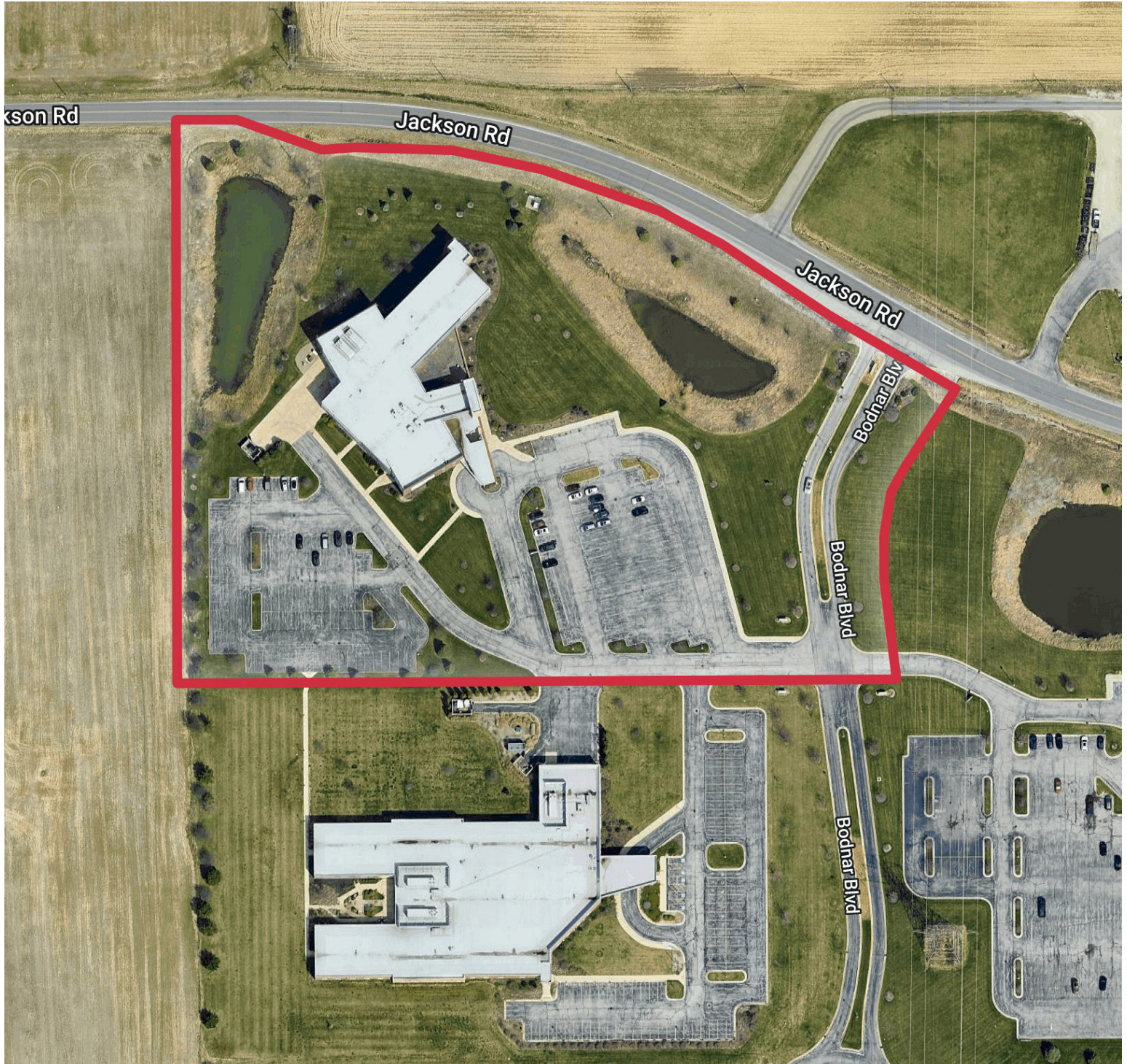
**Blair Wozny**  
Broker

D 574.485.1517  
[bwozny@cressy.com](mailto:bwozny@cressy.com)

**Noah Davey, CCIM**  
Senior Broker, Principal

D 574.485.1530  
[ndavey@cressy.com](mailto:ndavey@cressy.com)







# 1ST FLOOR PHOTOS

## MEDICAL OFFICE SPACE AVAILABLE

60101 Bodnar Boulevard | Mishawaka, IN 46544

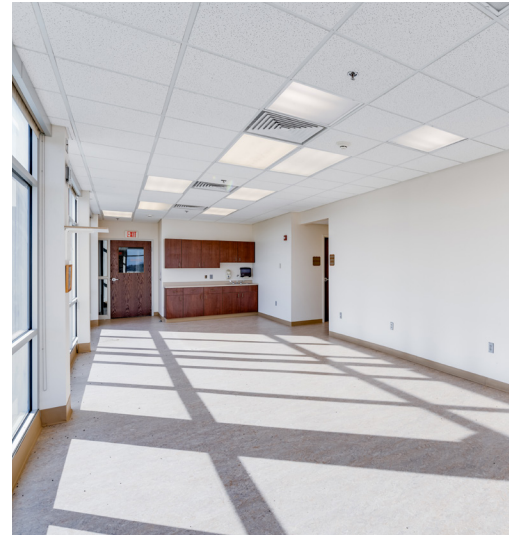




# 2ND FLOOR PHOTOS

## MEDICAL OFFICE SPACE AVAILABLE

60101 Bodnar Boulevard | Mishawaka, IN 46544





# UNFINISHED SPACE

## MEDICAL OFFICE SPACE AVAILABLE

60101 Bodnar Boulevard | Mishawaka, IN 46544





# FLOOR PLAN

## MEDICAL OFFICE SPACE AVAILABLE

60101 Bodnar Boulevard | Mishawaka, IN 46544

## 1st Floor Space



**Blair Wozny**  
**Broker**

D 574.485.1517  
bwozny@cressy.com

**Noah Davey, CCIM**  
Senior Broker, Principal  
D 574.485.1530  
ndavey@cressy.com



# FLOOR PLAN

## MEDICAL OFFICE SPACE AVAILABLE

60101 Bodnar Boulevard | Mishawaka, IN 46544

### 2nd Floor Space

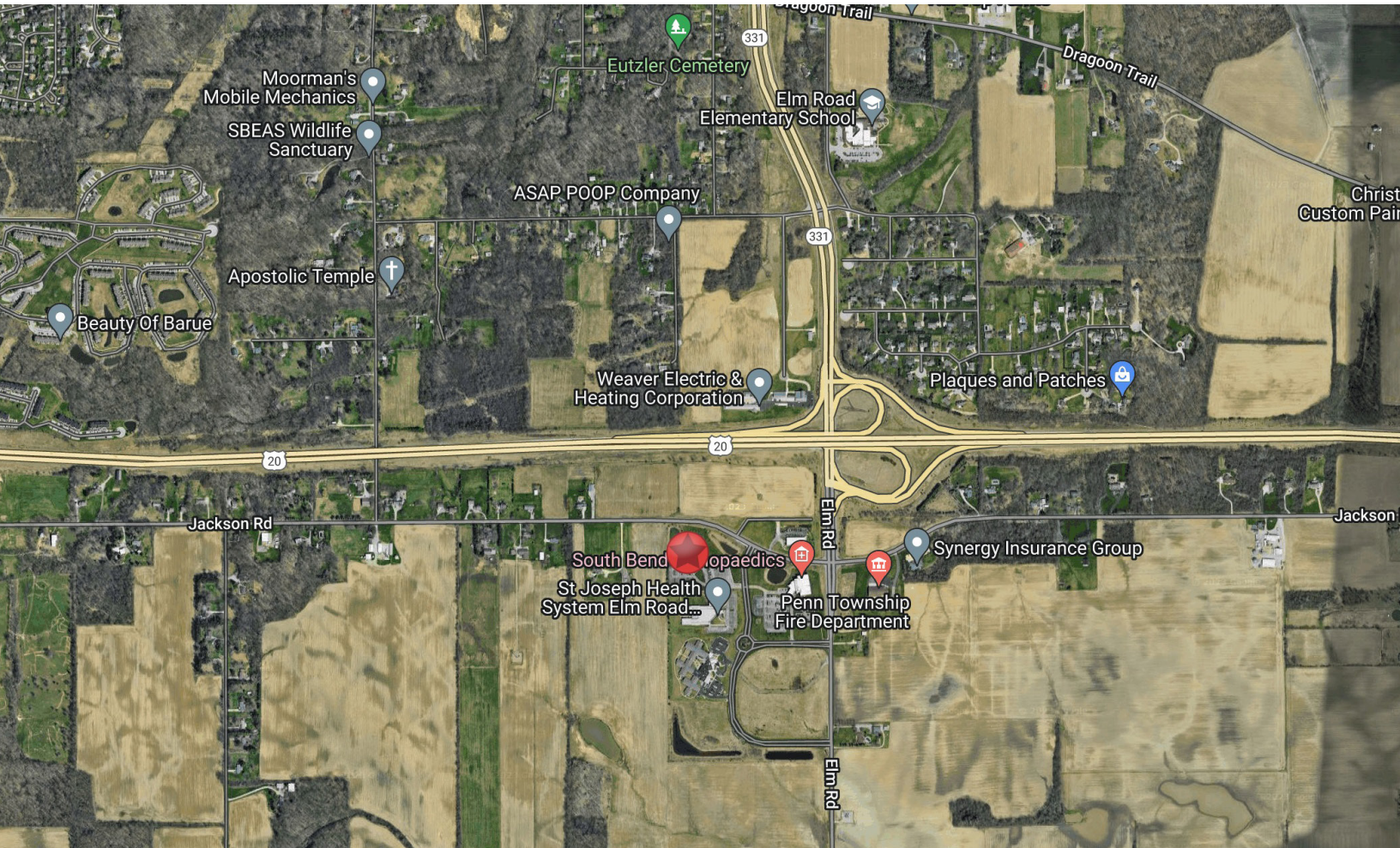




# LOCATION OVERVIEW

## MEDICAL OFFICE SPACE AVAILABLE

60101 Bodnar Boulevard | Mishawaka, IN 46544



- The property is easily accessible at the St. Joseph Valley Parkway (US 20/31 Bypass) and SR 331, providing easy access to Elkhart, Goshen, La Porte and the I-80/90 Toll Road to the north.
- The geographic location provides service to an under served population.

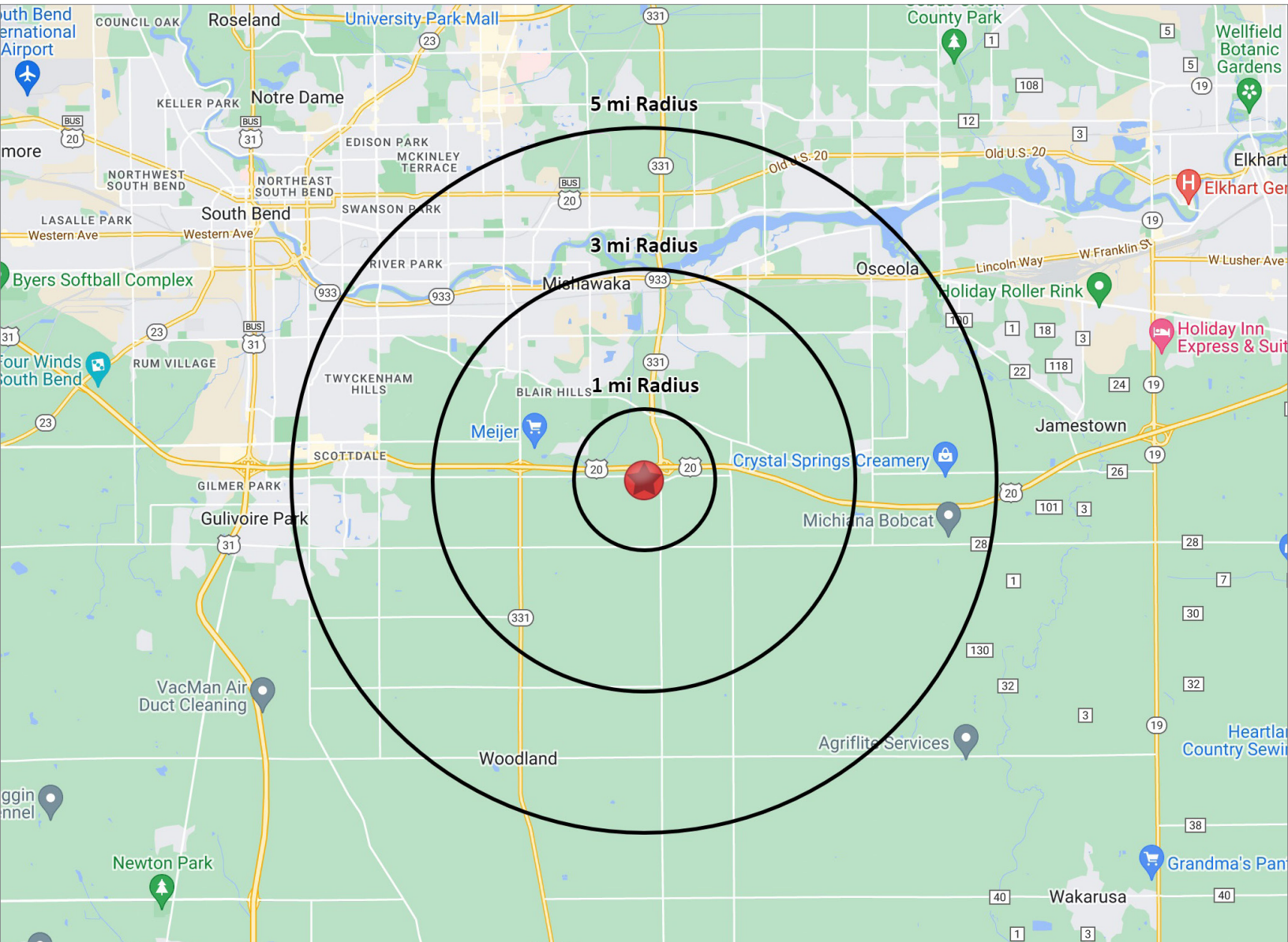




# 2023 DEMOGRAPHICS

## MEDICAL OFFICE SPACE AVAILABLE

60101 Bodnar Boulevard | Mishawaka, IN 46544



### POPULATION

1 MILE	945
3 MILE	19,032
5 MILE	72,954



### NUMBER OF HOUSEHOLDS

1 MILE	404
3 MILE	7,956
5 MILE	31,272



### AVERAGE HOUSEHOLD INCOME

1 MILE	\$95,177
3 MILE	\$85,396
5 MILE	\$84,619



### MEDIAN HOME VALUE

1 MILE	\$238,902
3 MILE	\$165,814
5 MILE	\$158,654



is the Global Brokerage Division  
of Cressy Commercial Real Estate.

Blair Wozny  
Broker

D 574.485.1517  
bwozny@cressy.com

Noah Davey, CCIM  
Senior Broker, Principal

D 574.485.1530  
ndavey@cressy.com