

## CLASS A COMMERCIAL BUILDING FOR LEASE/SALE

6915 N. Fir Rd. | Granger, IN 46530



## Class A Medical Building and Corner Vacant Land Parcel


- Building Size:** 7,841 SF
- Building Land:** ~ 2.00 Acres (to be replatted)
- Current Zoning:** C-6 Commercial
- Built:** 2016
- Parking:** Approximately 28 cars parking on site
- Utilities:** Municipal water and sewer
- Lease Rate:** \$25.00 - \$30.00 PSF NNN
- List Price:** \$2,500,000
  
- Vacant Land:** ~ 1.80 Acres (to be replatted)
- Current Zoning:** C-6 Commercial
- VL List Price:** \$1,075,000

### Details:

This 7,841 sq. ft. Class A commercial building sits on ~ 2.00 acres in the City of Mishawaka and was constructed in 2016. Offering modern design and quality finishes throughout, the property provides flexibility for a variety of medical and professional uses. The building is currently unoccupied and features one 4,570 sq. ft. suite fully built out as a medical office, ideal for immediate occupancy. An additional 3,271 sq. ft. of contiguous vacant space presents an excellent opportunity for expansion or can be configured for a separate tenant, making this property well-suited for owner-users or investors seeking growth potential.

[CLICK TO VIEW PROPERTY ONLINE](#)



P 574.271.4060 | [CRESSY.COM](http://CRESSY.COM) | CONNECT WITH US!      
200 N Church St., Suite 200, Mishawaka, IN 46544

Cressy Commercial Real Estate is a Minority Business Enterprise (MBE) as well as certified by the National Native American Supplier Council (NNASC).



Information furnished regarding property for sale, rental or financing is from sources deemed reliable. But no warranty or representation is made as to the accuracy thereof and same is submitted subject to errors, omissions, change of price, rental or other conditions, prior sale, leased, financing or withdrawal without notice. No liability of any kind is to be imposed on the broker herein. NAI Cressy is the Global Brokerage Division of Cressy Commercial Real Estate.

**Edward Bradley, CCIM/SIOR/CPM**  
Senior Vice President, Principal  
D 574.485.1538 | C 574.302.5220  
[eb Bradley@cressy.com](mailto:eb Bradley@cressy.com)

# EXTERIOR PHOTOS

CLASS A COMMERCIAL BUILDING FOR LEASE/SALE

6915 N. Fir Rd. | Granger, IN 46530



# INTERIOR PHOTOS

CLASS A COMMERCIAL BUILDING FOR LEASE/SALE

6915 N. Fir Rd. | Granger, IN 46530



**NAI**Cressy is the Global Brokerage Division of Cressy Commercial Real Estate.

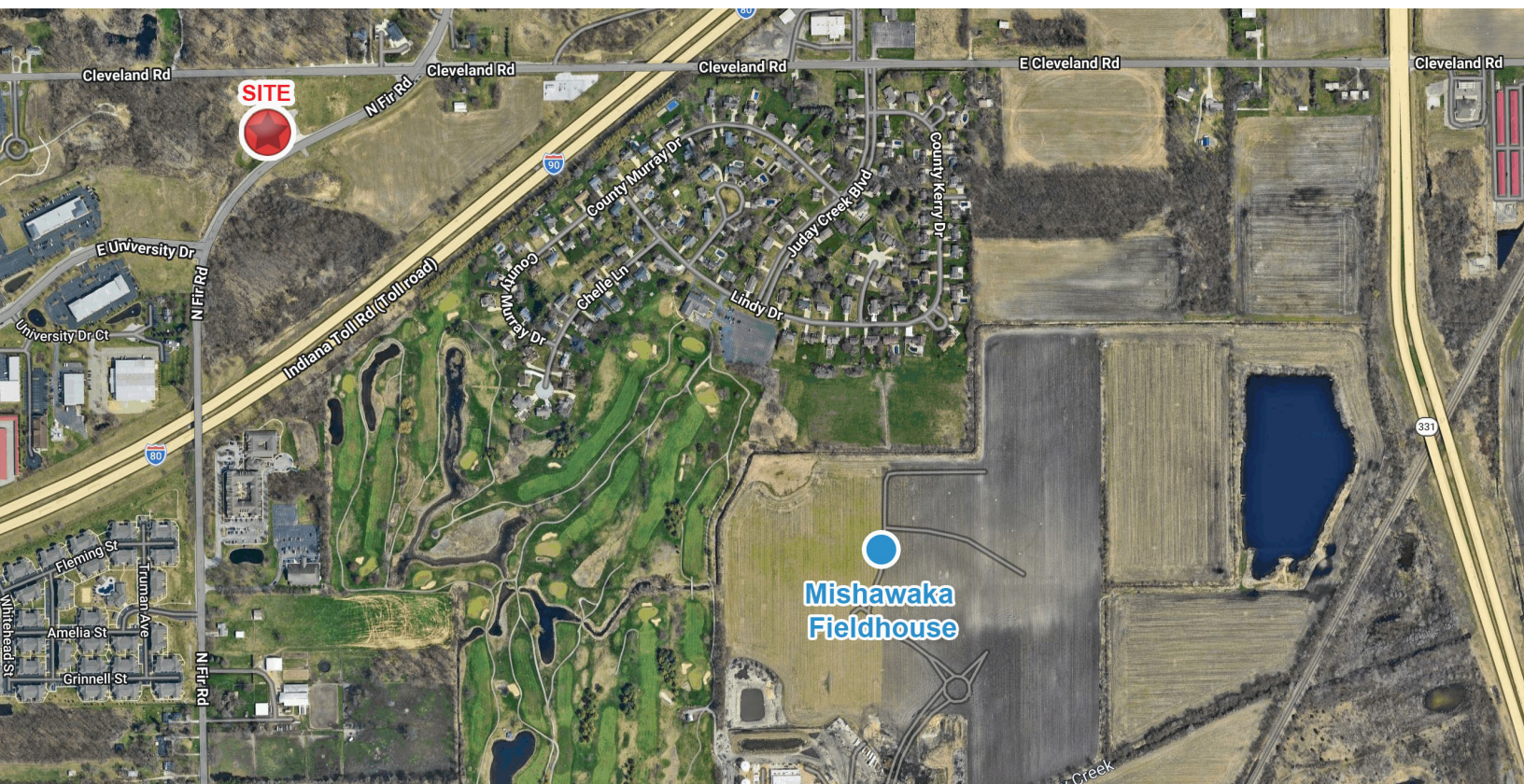
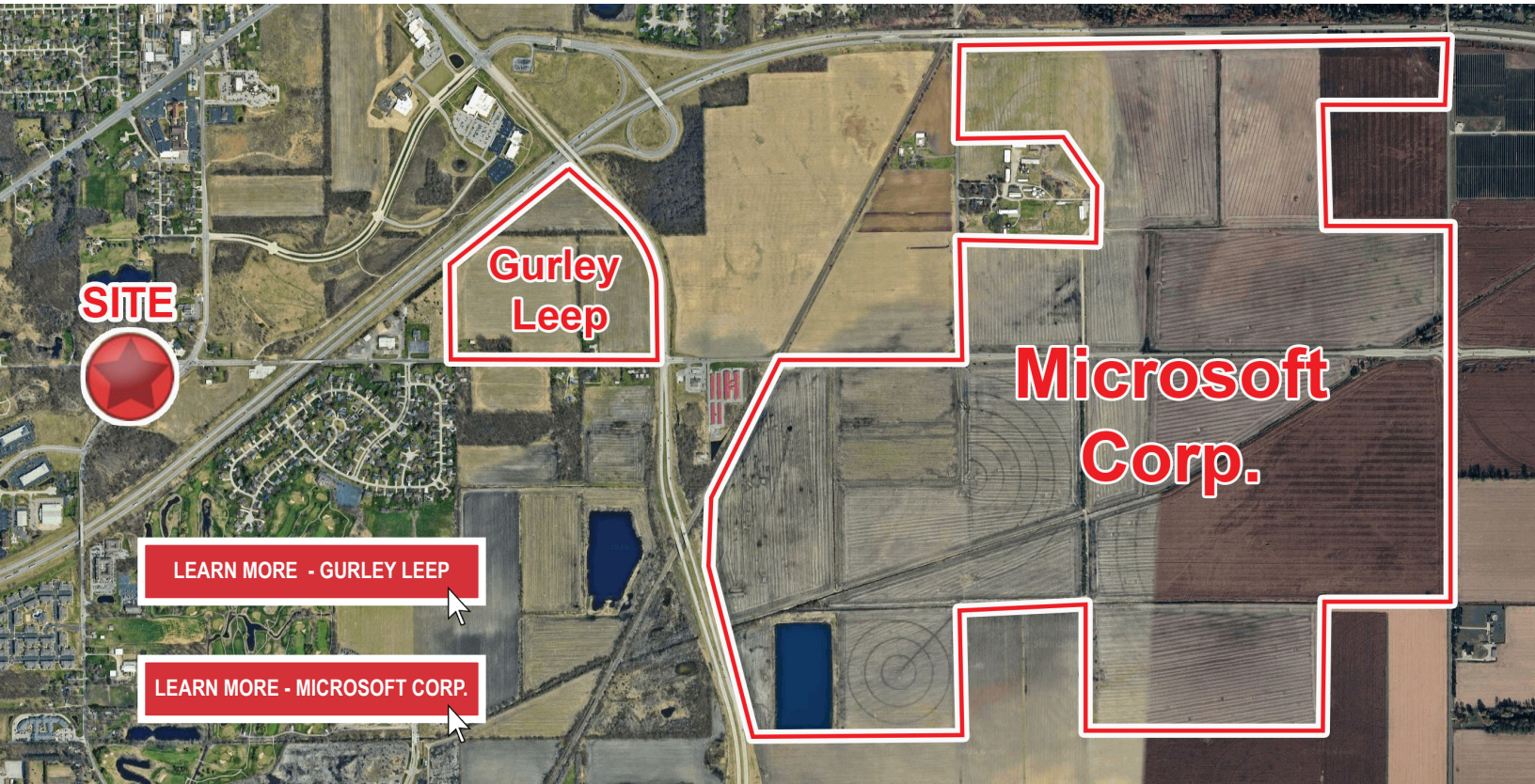
Edward Bradley, CCIM/SIOR/CPM  
Senior Vice President, Principal  
D 574.485.1538 | C 574.302.5220  
ebradley@cressy.com





# LOCATION OVERVIEW

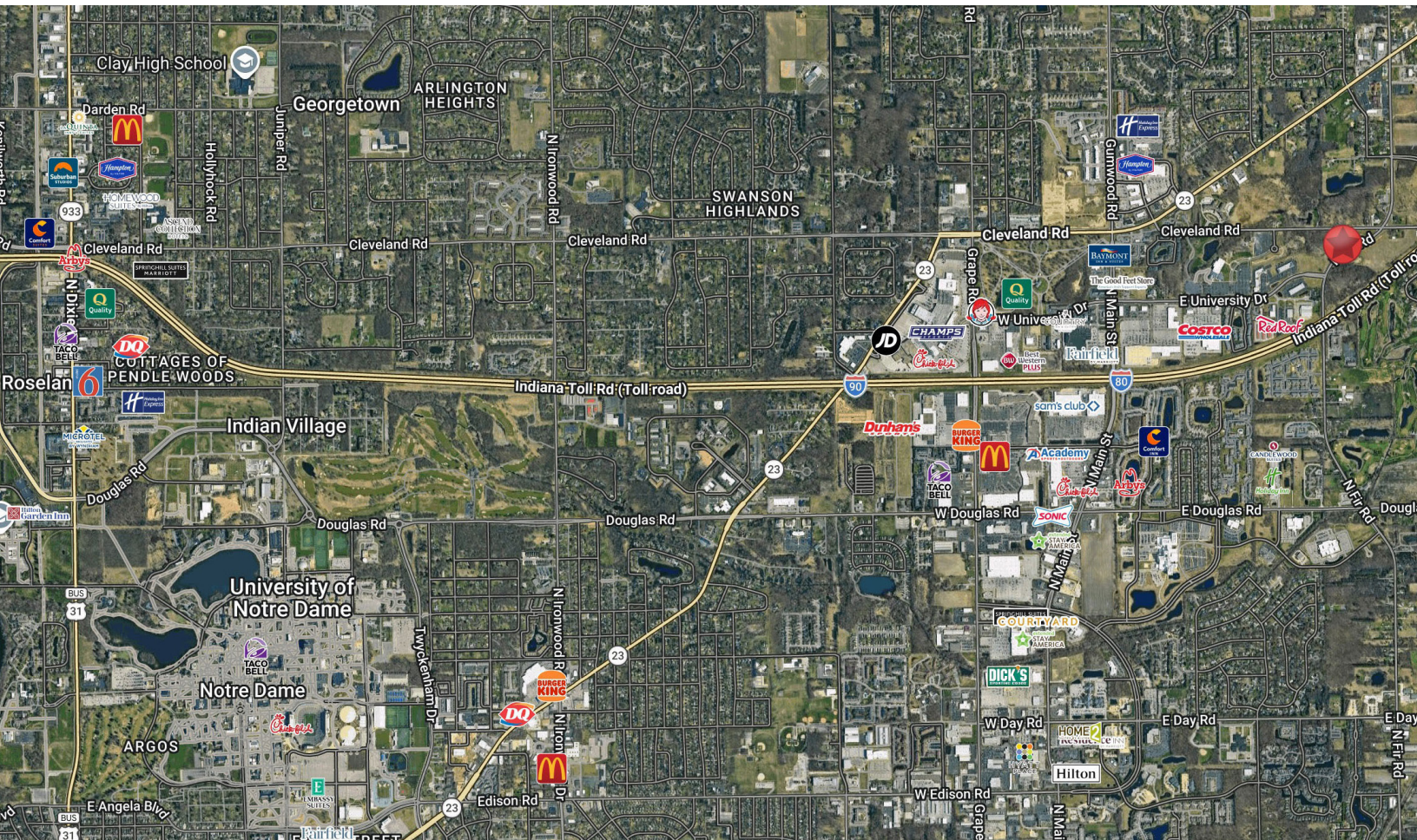
CLASS A COMMERCIAL BUILDING FOR LEASE/SALE  
6915 N. Fir Rd. | Granger, IN 46530



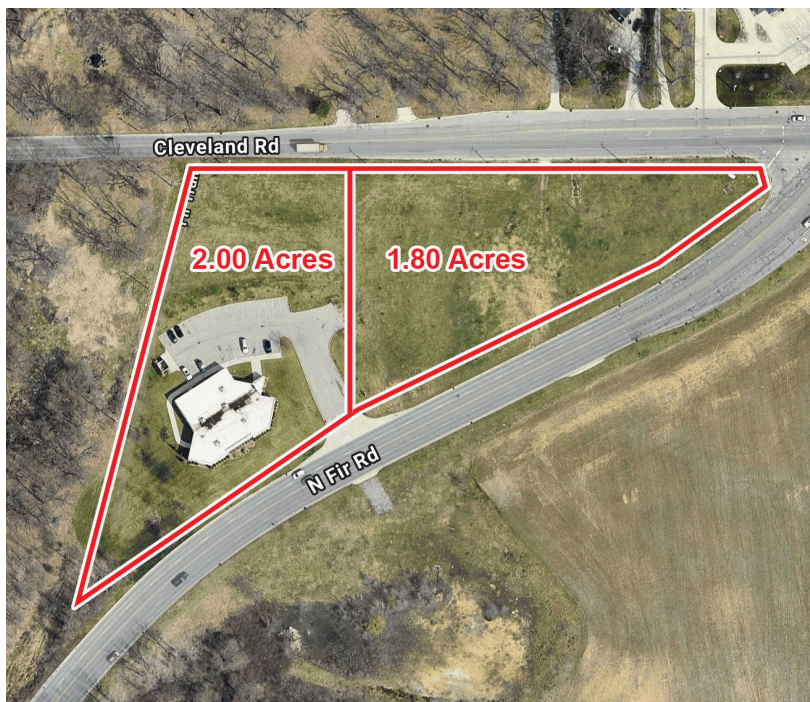
# LOCATION OVERVIEW

CLASS A COMMERCIAL BUILDING FOR LEASE/SALE

6915 N. Fir Rd. | Granger, IN 46530



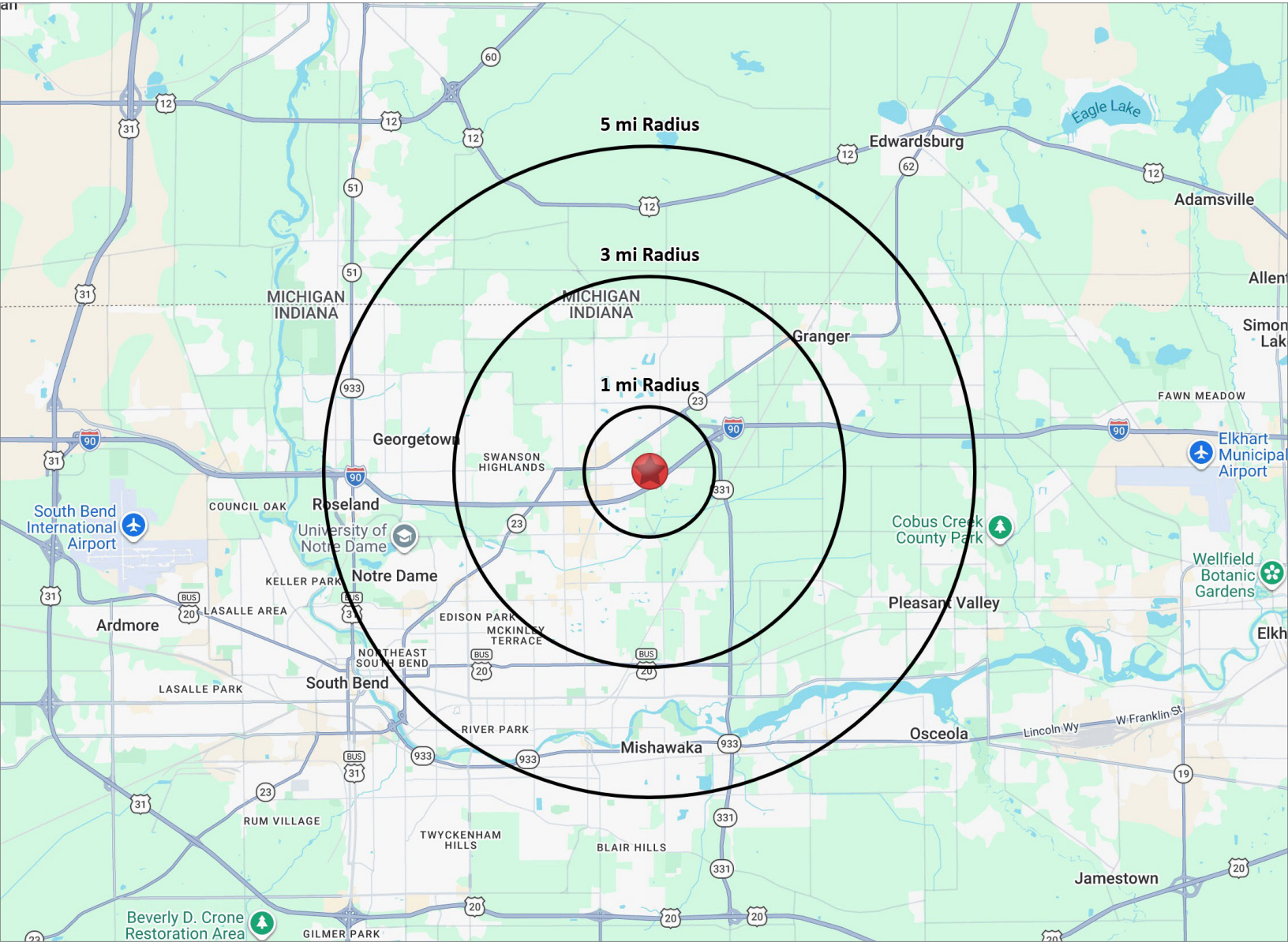
Excellent visibility at the intersection of Fir and Cleveland Roads with ingress, egress from Fir and Cleveland. Stoplight at corner. Within a mile of Interstate 80/90 Granger exit, the new Mishawaka Fieldhouse, St Joe Regional Medical Center, Beacon Granger campus, University Park Mall, new Gurley Leep auto mall, new Microsoft campus, and various assisted living communities and apartment complexes.



# 2025 DEMOGRAPHICS

CLASS A COMMERCIAL BUILDING FOR LEASE/SALE

6915 N. Fir Rd. | Granger, IN 46530



## POPULATION

1 MILE	5,836
3 MILE	41,206
5 MILE	125,168



## NUMBER OF HOUSEHOLDS

1 MILE	1,081
3 MILE	10,249
5 MILE	31,662



## AVERAGE HOUSEHOLD INCOME

1 MILE	\$114,623
3 MILE	\$125,102
5 MILE	\$106,522



## MEDIAN HOME VALUE

1 MILE	\$302,630
3 MILE	\$299,119
5 MILE	\$239,964