

VACANT LAND FOR SALE

3rd St. and Beech | Osceola, IN 46561



Vacant Land in a Great Location for Sale

Land: 5.89 Acres
Zoning: I-1 Light Industrial
Parcel: Corner Location with Frontage on Two Roads
List Price: \$300,000

[VIEW PROPERTY ONLINE](#)

Details:

This 5.89-acre site is cleared, level, and zoned I-Industrial, making it usable for various industrial purposes or future development. Located at the corner of 3rd Street and Beech Road in Osceola, the property benefits from its corner-lot position and visibility. It is located directly across from the two-building industrial complex that is available for sale separately, offering the option to combine the sites for expanded operations or multi-site use.



NAI Cressy

P 574.271.4060 | CRESSY.COM | CONNECT WITH US! [in](#) [X](#) [f](#) [yt](#)
200 N Church St., Suite 200, Mishawaka, IN 46544

Cressy Commercial Real Estate is a Minority Business Enterprise (MBE) as well as certified by the National Native American Supplier Council (NNASC).



Information furnished regarding property for sale, rental or financing is from sources deemed reliable. But no warranty or representation is made as to the accuracy thereof and same is submitted subject to errors, omissions, change of price, rental or other conditions, prior sale, leased, financing or withdrawal without notice. No liability of any kind is to be imposed on the broker herein. NAI Cressy is the Global Brokerage Division of Cressy Commercial Real Estate.

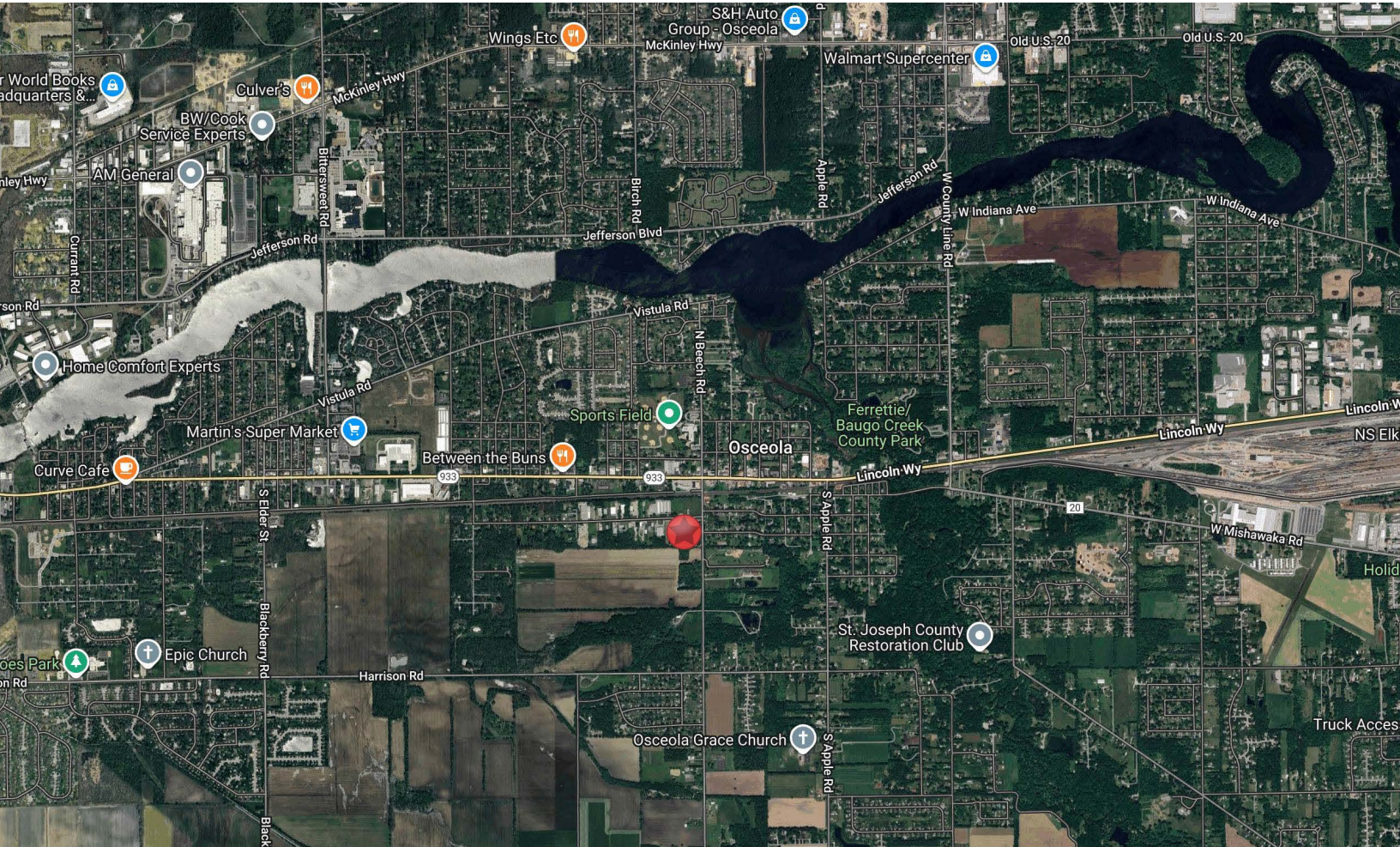
Ryan Gableman, CCIM/SIOR
Senior Broker, Principal
D 574.485.1502 | C 574.215.0336
rgableman@cressy.com

Richard Doolittle
Senior Broker, Principal
D 574.485.1535 | C 574.286.0971
rdoolittle@cressy.com



LOCATION OVERVIEW

VACANT LAND FOR SALE
3rd St. and Bech | Osceola, IN 46561



Located just off of SR-933 in Osceola, IN approximately 4 miles from the US-20 Bypass and 5 miles from the I-80/90 Toll Road.



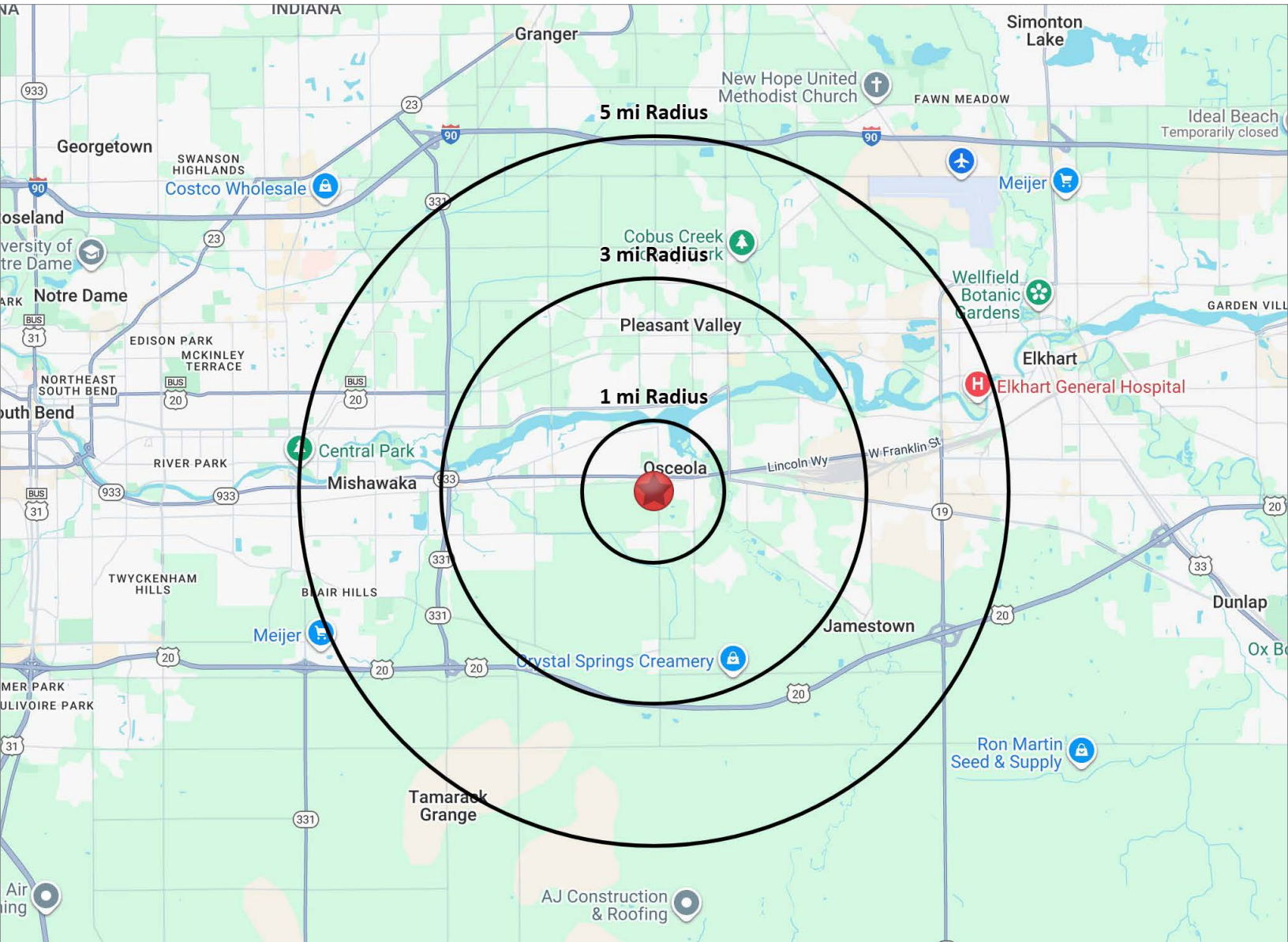
**SUBJECT
PROPERTY
5.89 Acres**

**AVAILABLE
SEPARATELY
1005 W. 3rd St,
Osceola, IN
62,672 Square Feet**

NAI Cressy is the Global Brokerage Division of Cressy Commercial Real Estate.

Ryan Gableman, CCIM/SIOR
Senior Broker, Principal
D 574.485.1502 | C 574.215.0336 | rgableman@cressy.com

Richard Doolittle
Senior Broker, Principal
D 574.485.1535 | C 574.286.0971 | rdoolittle@cressy.com



POPULATION



NUMBER OF HOUSEHOLDS



AVERAGE HOUSEHOLD INCOME



MEDIAN HOME VALUE

1 MILE	4,054
3 MILE	26,977
5 MILE	66,742

1 MILE	1,245
3 MILE	8,637
5 MILE	19,402

1 MILE	\$80,445
3 MILE	\$107,930
5 MILE	\$93,959

1 MILE	\$197,853
3 MILE	\$219,992
5 MILE	\$204,622