

Medical Office Space For Sale or Lease

Bodnar Boulevard & Elm Road

Mishawaka, Indiana



COMMERCIAL REAL ESTATE SERVICES, WORLDWIDE

Elm Road Medical Campus



Snapshot

Land: 25.46 Ac
Zoned: PUD
Utilities: Municipal
List Price: \$195,000 per Acre

Property Details

25.46 acres of vacant land totaling 7 parcels. Zoned PUD - Planned Unit Development. Less than one minute from the Elm Road Exit off US 20 Bypass

	Address	Acres	Total
#1	60341 Bodnar Blvd	10.57	\$2,061,150
#2	60340 Bodnar Blvd	5.10	\$994,500
#3	60250 Bodnar Blvd	5.03	\$980,850
#4	60331 Elm Rd	1.19	\$232,050
#5	60301 Elm Rd	1.19	\$232,050
#6	60281 Elm Rd	1.19	\$232,050
#7	60241 Elm Rd	1.19	\$232,050

4100 Edison Lakes Parkway, Suite 350
Mishawaka, Indiana
574.271.4060
574.271.4292 Fax
www.cressy.com

Global Brokerage Division of Cressy Commercial Real Estate

NOAH DAVEY
Senior Broker/Principal
574.271.4060
ndavey@cressy.com

BLAIR WOZNY
Broker
574.485.1517
bwozny@cressy.com

Information furnished regarding property for sale, rental or financing is from sources deemed reliable. But no warranty or representation is made as to the accuracy thereof and same is submitted subject to errors, omissions, change of price, rental or other conditions, prior sale, leased, financing or withdrawal without notice. No liability of any kind is to be imposed on the broker herein.

Medical Office Space For Sale or Lease

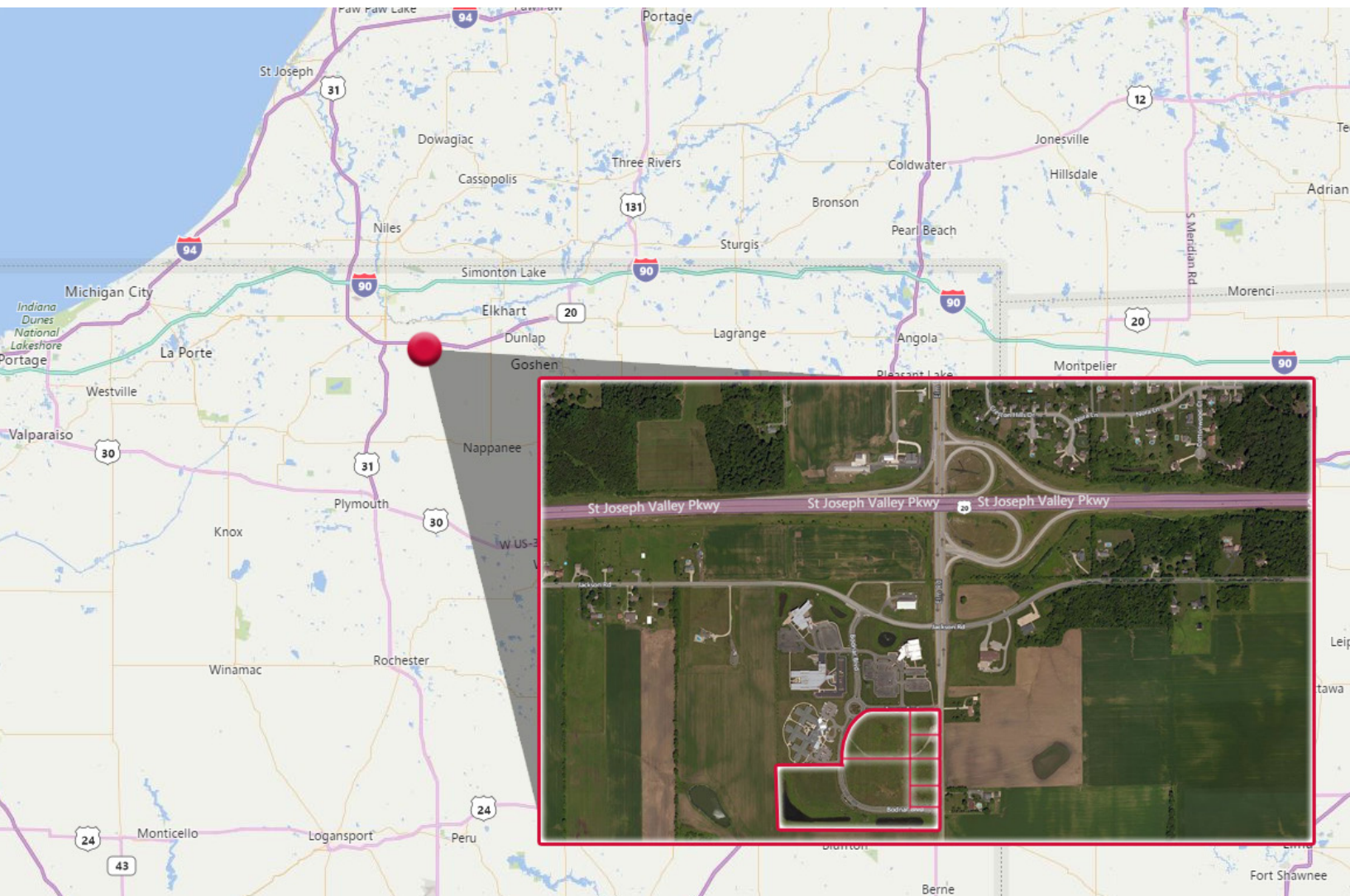
Bodnar Boulevard & Elm Road

Mishawaka, Indiana

NAI Cressy

COMMERCIAL REAL ESTATE SERVICES, WORLDWIDE

Less Than One Minute From The US 20 Bypass



Location

The property is easily accessible at the St. Joseph Valley Parkway (US 20/31 Bypass) and SR 331, providing easy access to Elkhart/Goshen, LaPorte and the I-80/90 Indiana Toll Road to the north. The geographic location provides service to an under served population.

4100 Edison Lakes Parkway, Suite 350
Mishawaka, Indiana
574.271.4060
574.271.4292 Fax
www.cressy.com

Global Brokerage Division of Cressy Commercial Real Estate

NOAH DAVEY
Senior Broker/Principal
574.271.4060
ndavey@cressy.com

BLAIR WOZNY
Broker
574.485.1517
bwozny@cressy.com

Information furnished regarding property for sale, rental or financing is from sources deemed reliable. But no warranty or representation is made as to the accuracy thereof and same is submitted subject to errors, omissions, change of price, rental or other conditions, prior sale, leased, financing or withdrawal without notice. No liability of any kind is to be imposed on the broker herein.